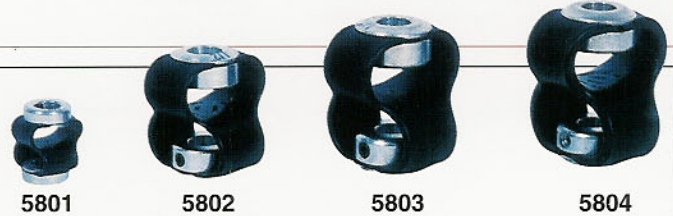


### K-COUPLING • UNMATCHED SIMPLICITY UNEQUALLED ADVANTAGES

*Design, production, and service engineers' idea of coupling perfection eliminates flexible connection problems*

**WHAT IT IS** - The K-Coupling is essentially a double-loop ELASTACAST® polyurethane elastomeric material assembled to zinc plated steel hubs. The hubs are assembled to the ELASTACAST element by specialized equipment which guarantees the precise amount of crimp for long life. Hubs are then attached to shafts with Allen screws. To achieve variations in flexibility or rigidity, modified designs of the urethane element are available on special order. The standard material for Series 5804 is compounded to withstand up to 40 inch pounds of torque at 1750 rpm in ambient temperatures to 200°. The Series 5803 withstands 28 inch pounds; Series 5802, 12 inch pounds; Series 5801, 3 inch pounds.



#### Four Standard Sizes

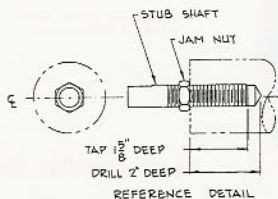
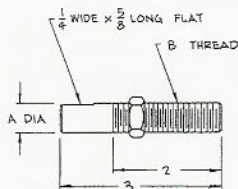
Part Number	A	B	C	D	Set Screw	Capacity
Series 5801	1 1/8"	1 1/8"	1 1/16"	1/16"	6-32	3 inch pounds Max. misalignment 10° angular 3/32" parallel
	Available in bore sizes of 3/16", 1/4", 5/16", 3/8"					
Series 5802	1 7/8"	1 3/4"	1"	3/8"	10-24	12 inch pounds Max. misalignment 15° angular 1/8" parallel
	Available in bore sizes of 1/4", 5/16", 3/8", 7/16", 1/2"					
Series 5803	2 1/8"	2 1/8"	1 1/4"	7/16"	1/4-20	28 inch pounds Max. misalignment 15° angular 3/16" parallel
	Available in bore sizes of 3/8", 7/16", 1/2", 9/16", 5/8"					
Series 5804	2 1/8"	2 3/8"	1 1/4"	3/8"	1/4-20	40 inch pounds Max. misalignment 15° angular 1/8" parallel
	Available in bore sizes of 1/2", 9/16", 5/8"					

**ORDERING INFORMATION:**  
When ordering, ALWAYS include bore sizes required.  
Example: 5801 1/4" x 5/16"

**NOTES**  
1) Bore tolerances are AGMA Class 2 - 000 + .002.  
2) All standard coupling hubs are zinc plated steel.

**KEYWAYS:**  
Keyways may be obtained on 5803 and 5804 series at extra cost. Standard Keyways are 1/8" for 1/2" diameter shaft and 3/16" for 9/16" and 5/8" diameter shafts.

### STUB SHAFTS



### STUB SHAFT

Catalog No.	A. Dia	B Thread
STSH-500	1/2	1/2-13UNC-2A
STSH-625	5/8	5/8-11UNC-2A
All Dimensions are in inches		
Stub Shaft includes (1) Jam Nut		

Mounting brackets are available for all products offered.

Please specify model MB-1 for Electro-mechanical speed switches and MB-2 for Electronic models.



## ZERO SPEED SWITCHES